

ma**ka**er

★★★★★  
**NAXOS**<sup>®</sup>  
CERAMICHE  
FINCIBEC GROUP

maker

RIVESTIMENTI IN PASTA BIANCA WHITE BODY WALL TILES

32x80,5

12,6"x31,7"



# indice index

Marl 3D	06
Graphic Marl - Spaccatella Hemp	12
Line Marl - Tavella Marl	18
Recreate Oyster	24
Nest Yosemite	30
Line Oyster - Brick Alum	34
Tavella Oyster - Brick Alum	40
Brick Design	44

# I 10 e la mia casa. La vivo, la sento.

Naxos, ispirata dalle potenzialità estetiche della materia ceramica, ha dato vita a Maker, la nuova collezione di rivestimenti che interpreta un'idea di decorazione lontana dalle mode, intima e minimalista.

Maker lavora sull'espressività degli impasti di argilla lavorati dall'abilità di artigiani ceramisti, tanto apprezzati dai designer contemporanei. Impasti lavorati e trasformati secondo tecniche antichissime che creano superfici uniche, sulle quali sono ben visibili le tracce lasciate dalle dita dell'artista, dagli utensili utilizzati, dalla trafilatura o dal tornio.

Maker è quindi una collezione fortemente materica, caratterizzata da colori naturali e ricercati, capaci di enfatizzare le differenti superfici che la compongono. Sono presenti in gamma numerose proposte decorative, armoniose e di grande tendenza, che raccontano attraverso mosaici, muretti e listelli la grande vocazione eclettica della collezione.

Colori: Alum; Oyster; Hemp; Marl. Formati rivestimento: 32 x 80,5 cm; 15,5 x 80,5 cm.

me and my home,  
I live it, I feel it.



The aesthetic potential of ceramic materials inspired Naxos to create the Maker, a new collection of tiles that conveys a decoration concept that is out of ordinary fashion: intimate and minimalist.

Maker focuses on the outstanding character of clay mixtures worked by skilled ceramists, much appreciated by contemporary designers. Mixtures crafted and processed using ancient techniques create unique surfaces on which the traces left by artist's fingers, the tools used, the die or the lathe are clearly visible.

That's why Maker is a highly textured collection, characterised by natural and sophisticated colours, that put in the spotlight all its different surfaces. The range boasts many harmonious and cutting-edge decoration solutions, from mosaic and wall tiles to strips, all expressing the great eclectic mastery of the collection. Colours: Alum; Oyster; Hemp; Marl. Tile sizes: 32 x 80.5 cm; 15.5 x 80.5 x cm







pers  
ona  
le

percezione

personal  
percezioni



\*\*\*\*\*  
**NAXOS**  
FINISIT GROUP

la mia casa  
ha un' anima.



Marl 3D



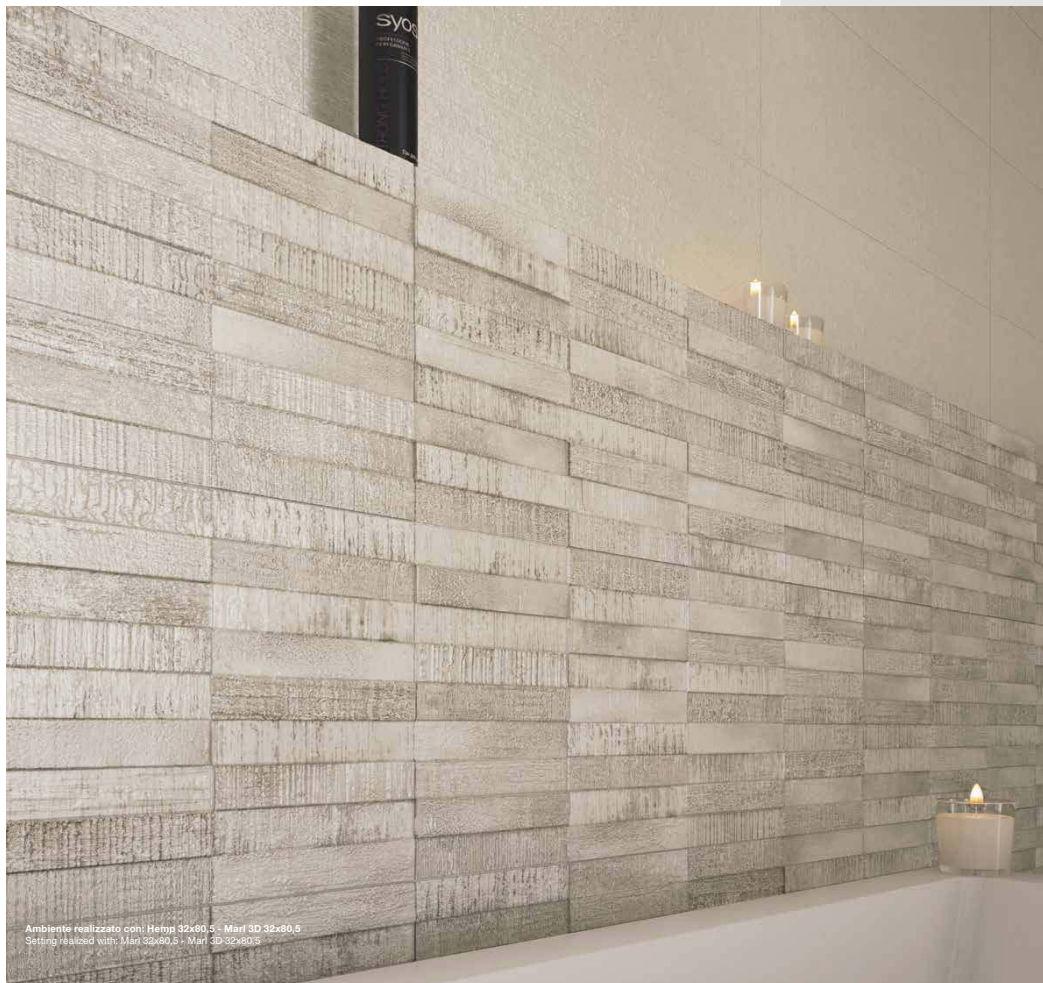
my home  
has a soul.



Ambiente realizzato con: Mari 32x80,5 - Hemp 32x80,5 - Mari 3D 32x80,5 - Chamarel Beige 23x100 pav.  
Setting realized with: Mari 32x80,5 - Hemp 32x80,5 - Mari 3D 32x80,5 - Chamarel Beige 23x100 pav.







Ambiente realizzato con: Hemp 32x80,5 - Mari 3D 32x80,5  
Setting realized with: Mari 32x80,5 - Mari 3D 32x80,5



Ambiente realizzato con:  
Mari 32x80,5 - Mari 32x80,5  
Mari 3D 32x80,5

Setting realized with:  
Mari 32x80,5 - Hemp 32x80,5  
Mari 3D 32x80,5



la

fantasia di vivere.



Ambiente realizzato con: Marl 32x80,5 - Graphic Marl 32x80,5  
Setting realized with: Marl 32x80,5 - Graphic Marl 32x80,5

the dream of living.

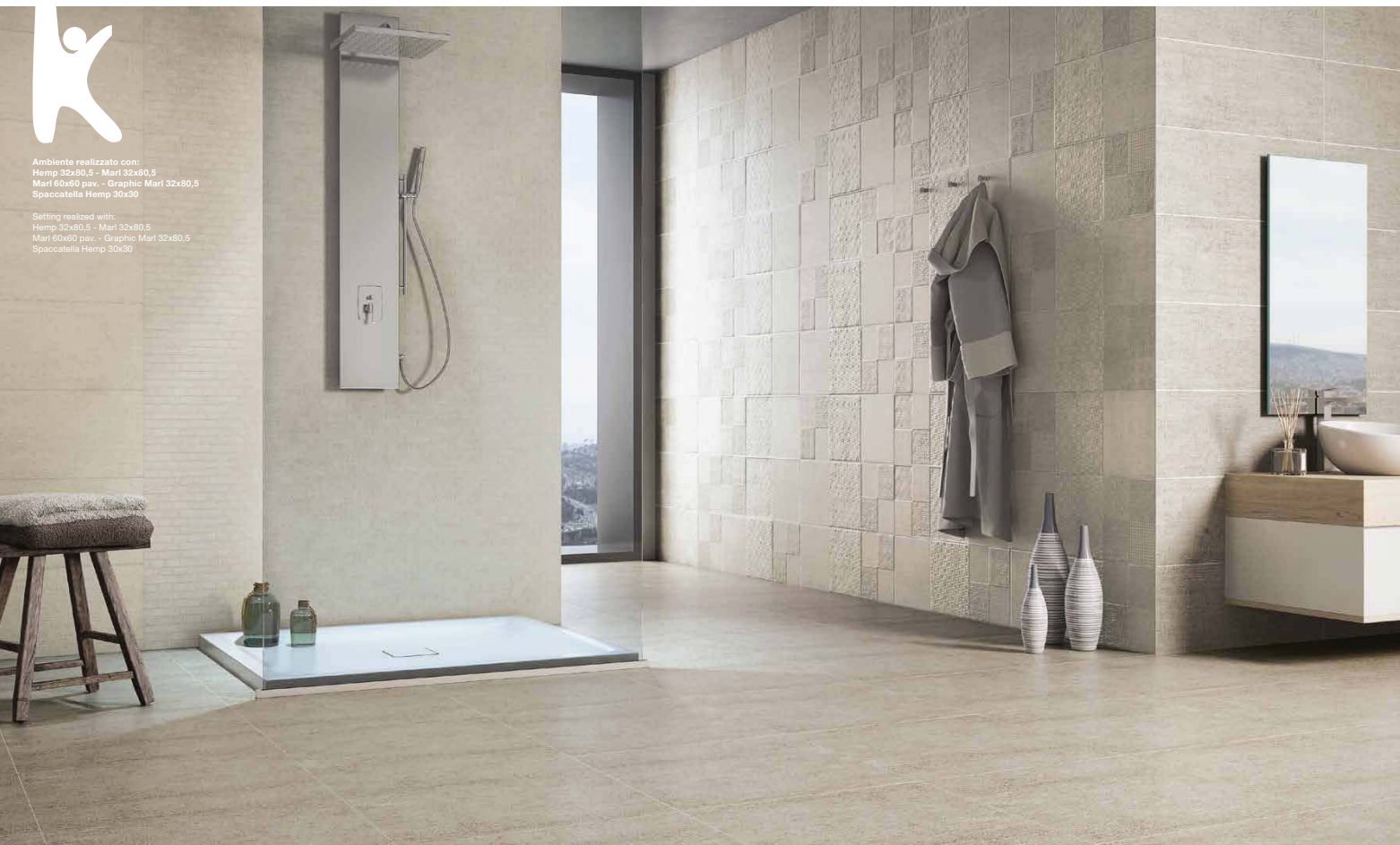
Graphic  
Marl

Spaccatella  
Hemp



Ambiente realizzato con:  
Hemp 32x80,5 - Mari 32x80,5  
Mari 60x60 pav. - Graphic Mari 32x80,5  
Spaccatella Hemp 30x30

Setting realized with:  
Hemp 32x80,5 - Mari 32x80,5  
Mari 60x60 pav. - Graphic Mari 32x80,5  
Spaccatella Hemp 30x30





Ambiente realizzato con: Hemp 32x80,5 - Spaccatella Hemp 30x30 - Mari 60x60 pav.  
Setting realized with: Hemp 32x80,5 - Spaccatella Hemp 30x30 - Mari 60x60 pav.



Line Marl Tavella Marl


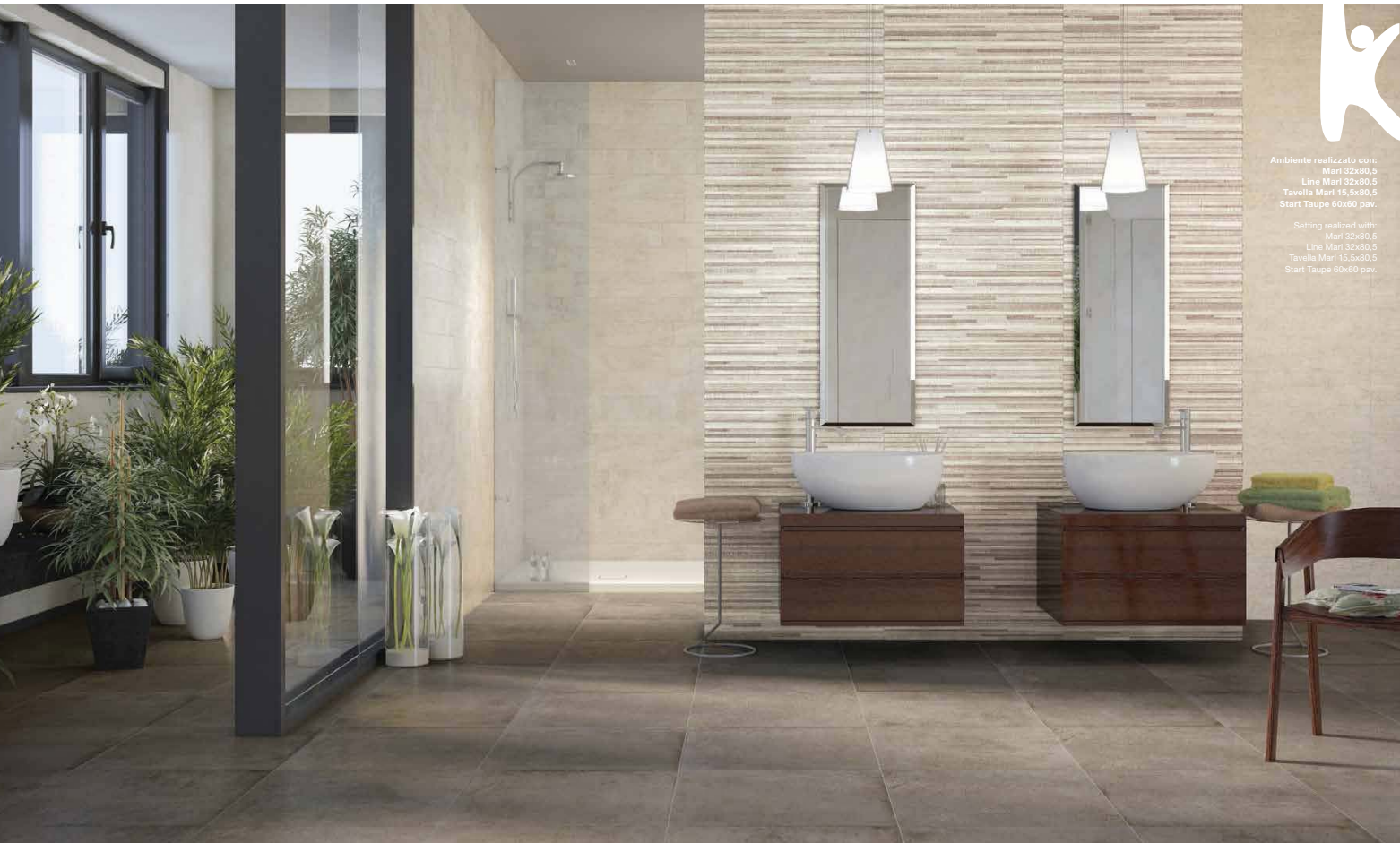


a home for a friend.

una  
casa per  
amica.

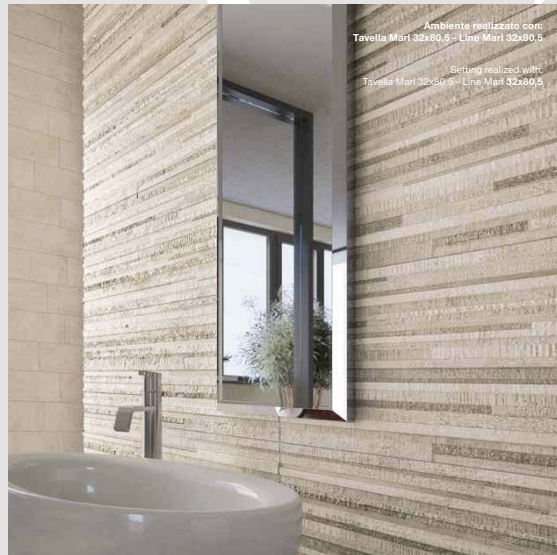






Ambiente realizzato con:  
Marl 32x80,5  
Line Marl 32x80,5  
Tavella Marl 15,5x80,5  
Start Taupe 60x60 pav.

Setting realized with:  
Marl 32x80,5  
Line Marl 32x80,5  
Tavella Marl 15,5x80,5  
Start Taupe 60x60 pav.



Ambiente realizzato con:  
Tavella Mari 32x60,5 - Line Mari 32x80,5

Setting realized with:  
Tavella Mari 32x60,5 - Line Mari 32x80,5



Ambiente realizzato con: Tavella Mari 15,5x80,5  
Setting realized with: Tavella Mari 15,5x80,5

ho

voglia di cose belle.

i want nice things.



---

Recreate  
Oyster





Ambiente realizzato con: Alum 32x80,5 - Oyster 32x80,5 - Recreate Oyster 32x80,5 - Start Concrete 60x60 pav.  
Setting realized with: Alum 32x80,5 - Oyster 32x80,5 - Recreate Oyster 32x80,5 - Start Concrete 60x60 pav.







Ambiente realizzato con:  
Alum 32x80,5 - Oyster 32x80,5

Setting realized with:  
Alum 32x80,5 - Oyster 32x80,5



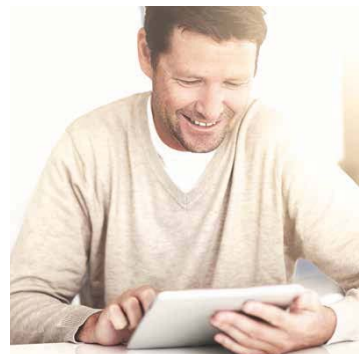
Ambiente realizzato con: Alum 32x80,5 - Oyster 32x80,5 - Recreate Oyster 32x80,5 - Start Concrete 60x60 pav.  
Setting realized with: Alum 32x80,5 - Oyster 32x80,5 - Recreate Oyster 32x80,5 - Start Concrete 60x60 pav.

the energy of my style.



★★★★★  
**NAXOS**  
FINCIBEC GROUP

Nest  
Yosemite



|

energia del  
mio stile.





Ambiente realizzato con: Oyster 32x80,5 - Alum 32x80,5 - Nest Yosemite 30x31,5 - Oyster 60x60 pav.  
Setting realized with: Oyster 32x80,5 - Alum 32x80,5 - Nest Yosemite 30x31,5 - Oyster 60x60 pav.



Brick  
Alum

Line  
Oyster



| )

anima della  
mia casa.

the soul of my home.





Ambiente realizzato con: Alum 32x80,5 - Line Oyster 32x80,5 - Brick Alum 10,5x40 - Chamarel White 23x100 pav.  
Setting realized with: Alum 32x80,5 - Line Oyster 32x80,5 - Brick Alum 10,5x40 - Chamarel White 23x100 pav.





Ambiente realizzato con:  
Brick Alum 10,5x40  
Chamarel White 23x100 pav.

Setting realized with:  
Brick Alum 10,5x40  
Chamarel White 23x100 pav.



★★★★★  
**NAXOS**  
FINCIBEC GROUP

Ambiente realizzato con: Line Oyster 32x80,5  
Setting realized with: Line Oyster 32x80,5

un

mondo che  
gira intorno a noi.



a world that  
revolves around us.

Brick  
Alum

Tavella  
Oyster

Ambiente realizzato con: Tavella Oyster 15,5x80,5  
Setting realized with: Tavella Oyster 15,5x80,5







Ambiente realizzato con: Alum 32x80,5 - Oyster 32x80,5 - Tavella Oyster 15,5x80,5 - Brick Alum 10,5x40 - Cottage Orties 23x100 pav.  
Setting realized with: Alum 32x80,5 - Oyster 32x80,5 - Tavella Oyster 15,5x80,5 - Brick Alum 10,5x40 - Cottage Orties 23x100 pav.

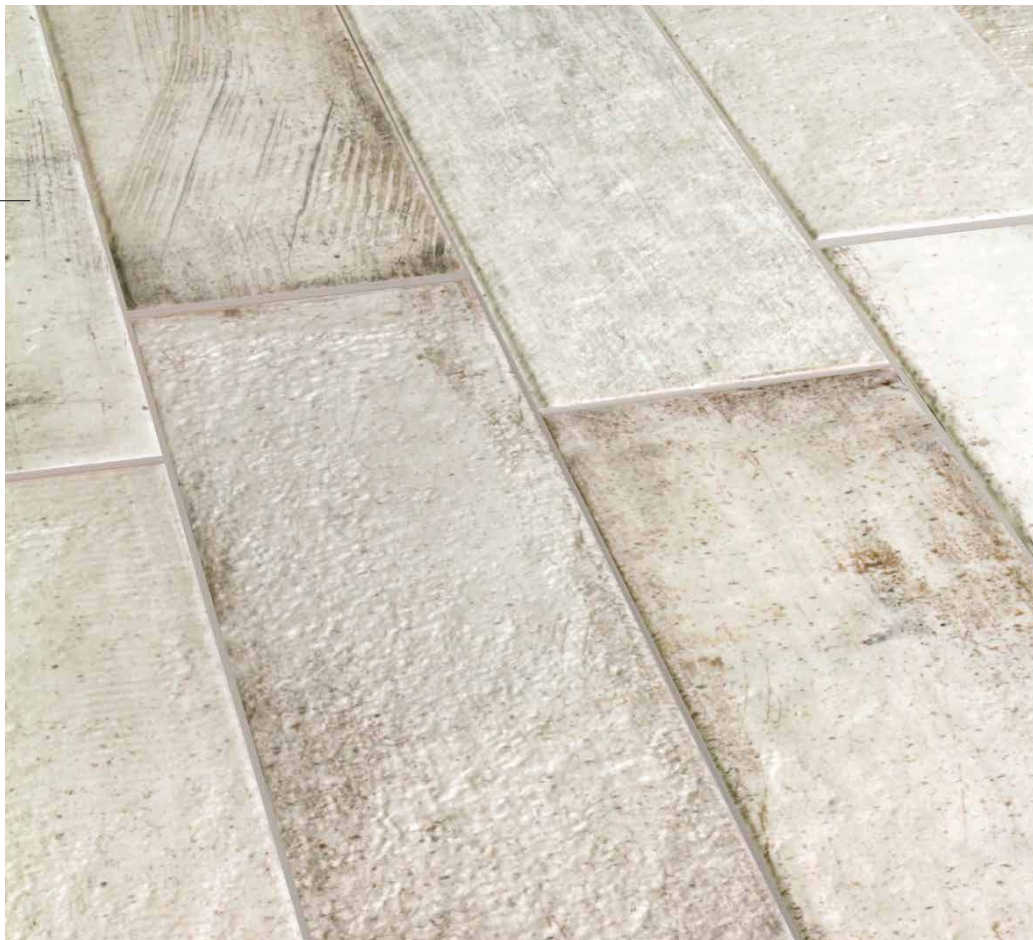




Brick  
Design

la

gioia di abitarla.





Ambiente realizzato con: Brick Design 10,5x40  
Setting realized with: Brick Design 10,5x40



RIVESTIMENTI IN PASTA BIANCA WHITE BODY WALL TILES



32x80,5  
**93431 ALUM**  
■ 105



10,5x40  
**95460 BRICK ALLUM**  
■ 167



10,5x40  
**95461 BRICK DESIGN**  
■ 169



32x80,5  
**93433 HEMP**  
■ 105



10,5x40  
**95462 BRICK HEMP**  
■ 167



32x80,5  
**93432 OYSTER**  
■ 105



15,5x80,5  
**95463 TAVELLA OYSTER**  
■ 155



32x80,5  
**93434 MARL**  
■ 105



15,5x80,5  
**95464 TAVELLA MARL**  
■ 155



32x80,5  
**93440 OYSTER 3D**  
■ 117



32x80,5  
**93443 LINE OYSTER**  
■ 117



32x80,5  
**93442 MARL 3D**  
■ 117



32x80,5  
**93444 LINE MARL**  
■ 117



32x80,5  
**93447 RECREATE OYSTER**  
■ 117



32x80,5  
**93445 GRAPHIC OYSTER**  
■ 117



32x80,5  
**93448 RECREATE MARL**  
■ 117



32x80,5  
**93446 GRAPHIC MARL**  
■ 117

DECORI . DECORS



30x30  
**94348 SPACCATELLA MIX OYSTER**  
● 33



30x30  
**94349 SPACCATELLA ALLUM**  
● 33



30x31,5  
**94998 NEST YOSEMITE (30 tessere)**  
● 78



30x30  
**94350 SPACCATELLA MIX MARL**  
● 33



30x30  
**94352 SPACCATELLA HEMP**  
● 33



30x31,5  
**94997 NEST TUNDRA (30 tessere)**  
● 78

DECORI . DECORS





60x60  
**94371 OYSTER**  
■ 105



60x60  
**94372 MARL**  
■ 105



23x100  
**94807 CHAMAREL WHITE**  
■ 99



23x100  
**94368 CHAMAREL BEIGE**  
■ 99

**Pavimenti abbinabili con la collezione Maker:**  
**Start Concrete 60x60 e Start Taupe 60x60, serie Cottage e serie Sherwood**

Floors that can be matched with the Maker collection:  
**Start Concrete 60x60 and Start Taupe 60x60, Cottage series and Sherwood series**

**PESI E IMBALLI RIVESTIMENTO**  
WALL TILE WEIGHTS AND PACKAGING

	32x80,5	15,5x80,5	10,5x40
	Pc. 5 12 16	M <sup>2</sup> 1,288 1,497 0,67	Kg 20 24 10,5
	Colli boxes 40 40 -	M <sup>2</sup> 51,52 59,89 -	Kg 800 960 -

**NOTE**  
NOTES

I PRODOTTI POSSONO ESSERE MODIFICATI DA FINCIBEC SENZA PREAVVISO, RISPONDEANDO OGNI RESPONSABILITÀ SU POSSIBILI DANNI DIRETTI O INDIRETTI CAUSATI DA POTENZIALI MODIFICHE. FINCIBEC RESERVES THE RIGHT TO MODIFY ITS PRODUCTS WITHOUT PRIOR NOTICE AND CANNOT BE HELD LIABLE FOR DIRECT OR INDIRECT DAMAGE CAUSED BY SUCH MODIFICATIONS.

VERIFICARE SEMPRE LA CORRETTEZZA DELLE INFORMAZIONI E DEI DATI RELATIVI A CODICI, IMBALLAGGI E PESI, CONSULTANDO IL LISTINO PREZZI IN VIGORE.

LE TONALITÀ DEI COLORI RIPORTATE NEL CATALOGO SONO INDICATIVE. THE COLOURS SHADES, REPORTED ON THE CATALOGUE, ARE INDICATIVE.

**PESI E IMBALLI PAVIMENTO**  
FLOOR TILE WEIGHTS AND PACKAGING

	60x60	23x100
	Pc. 3 5	M <sup>2</sup> 1,08 1,15
	Colli boxes 40 48	M <sup>2</sup> 43,2 55,2
	Kg 900 1152	

**CATEGORIE D'IMPIEGO PER PAVIMENTI IN GRES FINE PORCELLANATO**  
USE CLASSES FOR FINE PORCELAIN STONWARE FLOORS

**C1** PIASTRELLE DA PAVIMENTO CONSIGLIATE PER CALPESTIO LEGGERO  
FLOOR TILES RECOMMENDED FOR LIGHT POUNDING

**C2** PIASTRELLE DA PAVIMENTO CONSIGLIATE PER CALPESTIO MEDIO-LEGGERO  
FLOOR TILES RECOMMENDED FOR MEDIUM-LIGHT POUNDING

**C3** PIASTRELLE DA PAVIMENTO CONSIGLIATE PER CALPESTIO MEDIO  
FLOOR TILES RECOMMENDED FOR MEDIUM POUNDING

**C4** PIASTRELLE DA PAVIMENTO CONSIGLIATE PER CALPESTIO MEDIO-PESANTE  
FLOOR TILES RECOMMENDED FOR MEDIUM-HEAVY POUNDING

**C5** PIASTRELLE DA PAVIMENTO CONSIGLIATE PER CALPESTIO INTENSO  
FLOOR TILES RECOMMENDED FOR HEAVY USES

**VAZIONI CROMATICHE**  
COLOUR VARIATIONS

V1 ASPETTO UNIFORME  
EVEN APPEARANCE



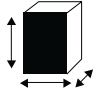




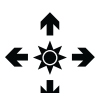



V2 LIEVE VARIAZIONE  
LIGHT VARIATION

V3 MEDIA VARIAZIONE  
MEDIUM VARIATION

V4 INTENSA VARIAZIONE  
STRONG VARIATION

È INDISPENSABILE ALL'ATTO DELLA POSA, PRELEVARE LE PIASTRELLE DA PIÙ CONFEZIONI.  
IT IS NECESSARY TO TAKE THE TILES FROM SEVERAL DIFFERENT BOXES WHEN LAYING THEM.

**CARATTERISTICHE TECNICHE . TECHNICAL DATA**
**PAVIMENTI IN GRES FINE PORCELLANATO FINE PORCELAIN STONEWARE FLOOR TILES**



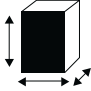

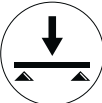
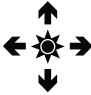



 <b>NAXOS</b> <small>FINCIBEC GROUP</small> <b>ISO 13006B1a</b> <b>EN 14411/G</b>	<b>CARATTERISTICHE TECNICHE</b> TECHNICAL DATA CARACTÉRISTIQUES TECHNIQUES TECHNISCHE DATEN CARACTERÍSTICAS TÉCNICAS	<b>TIPO DI PROVA</b> STANDARD OF TEST NORME DU TEST TESTNORM TIPO DE PRUEBA 	<b>VALORE NAXOS</b> NAXOS STANDARDS VALEUR NAXOS ERGEBNIS NAXOS VALOR DE NAXOS
	<b>DIMENSIONI</b> SIZES DIMENSIONS ABMESSUNGEN DIMENSIONES	<b>ISO 10545.2</b>	<b>A NORMA</b> ACCORDING TO NORM SELON LA NORME NACH NORM CONFORME
	<b>ASSORBIMENTO D'ACQUA</b> WATER ABSORPTION ABSORPTION D'EAU WASSERAUFNAHME ABSORCIÓN DEL AGUA	<b>ISO 10545.3</b>	$\leq 0,2\%$
	<b>SFORZO DI ROTTURA</b> MODULUS OF RUPTURE EFFORT DE RUPTURE BRUCHLAST ESFUERZO DE ROTURA  <b>RESISTENZA A FLESSIONE</b> BREAKING STRENGTH RESISTANCE A LA FLEXION BIEGEFESTIGKEIT RESISTENCIA A LA FLEXIÓN	<b>ISO 10545.4</b>	$S \geq 1300 \text{ N}$  $R \geq 35 \text{ N/MM}^2$
	<b>RESISTENZA AGLI SHOCK TERMICI</b> RESISTANCE TO THERMAL SHOCK RESISTANCE AUX CHOQUES THERMIQUE TEMPERATURWECHSELBESTÄNDIGKEIT RESISTENCIA A LOS CAMBIOS TÉRMICOS	<b>ISO 10545.9</b>	<b>GARANTITA</b> GUARANTEED GARANTIE GARANTIERT GARANTIZADA
	<b>RESISTENZA AL GELO</b> FROST RESISTANCE RESISTANCE AU GEL FROSTBESTÄNDIGKEIT RESISTENCIA A LA HELADA	<b>ISO 10545.12</b>	<b>GARANTITA</b> GUARANTEED GARANTIE GARANTIERT GARANTIZADA
	<b>COEFFICIENTE DI DILATAZIONE TERMICA LINEARE</b> THERMAL EXPANSION COEFFICIENT COEFFICIENT DE DILATATION THERMIQUE LINEARE WÄRMEAUSDEHNUNGSKOEFFIZIENT COEFICIENTE DE DILATACIÓN TERMICA LINEAR	<b>ISO 10545.8</b>	<b>A NORMA</b> ACCORDING TO NORM SELON LA NORME NACH NORM CONFORME
	<b>RESISTENZA ALL'ATTACCO CHIMICO</b> CHEMICAL RESISTANCE RESISTANCE CHIMIQUE BESTÄNDIGKEIT GEGEN CHEMICALIEN RESISTENCIA AL ATAQUE QUIMICO	<b>ISO 10545.13</b>	<b>A NORMA</b> ACCORDING TO NORM SELON LA NORME NACH NORM CONFORME
	<b>RESISTENZA ALLE MACCHIE</b> STAINS RESISTANCE RESISTANCE AUX TACHES FLECKENBESTÄNDIGKEIT RESISTENCIA A LAS MANCHAS	<b>ISO 10545.14</b>	<b>A NORMA</b> ACCORDING TO NORM SELON LA NORME NACH NORM CONFORME
	<b>RESISTENZA ALLO SCIVOLAMENTO</b> SLIP RESISTANCE RESISTANCE AU GLISSEMENT RUTSCHFESTIGKEIT RESISTENCIA AL DESLIZAMIENTO	<b>ANSI A 137.1 - DCOF</b> (Coefficiente di attrito dinamico) (Coefficient of kinetic friction)  <b>DIN 51130</b>	$WET > 0,42$  <b>R9</b>

Escluso pezzi speciali ed elementi decorativi

 With the exception of special pieces and decors . A l'exception de pièces spéciales et éléments décoratifs  
 Ausschließlich Formstücke und Dekorteile . Excluido piezas especiales y elementos decorativos

CARATTERISTICHE TECNICHE . TECHNICAL DATA

RIVESTIMENTI IN PASTA BIANCA RETTIFICATI WHITE BODY WALL TILES RECTIFIED

 ***** <b>NAXOS</b> <sup>®</sup> FINCIBEC GROUP ISO 13006BIII EN 14411/L	<b>CARATTERISTICHE TECNICHE</b> TECHNICAL DATA CARACTÉRISTIQUES TECHNIQUES TECHNISCHE DATEN CARACTERÍSTICAS TÉCNICAS	<b>TIPO DI PROVA</b> STANDARD OF TEST NORME DU TEST TESTNORM TIPO DE PRUEBA 	<b>VALORE NAXOS</b> NAXOS STANDARDS VALEUR NAXOS ERGEBNIS NAXOS VALOR DE NAXOS
	<b>DIMENSIONI</b> SIZES DIMENSIONS ABMESSUNGEN DIMENSIONES	ISO 10545.2	<b>A NORMA</b> ACCORDING TO NORM SELON LA NORME NACH NORM CONFORME
	<b>ASSORBIMENTO D'ACQUA</b> WATER ABSORPTION ABSORPTION D'EAU WASSERAUFNAHME ABSORCIÓN DEL AGUA	ISO 10545.3	> 10%
	<b>SFORZO DI ROTTURA</b> MODULUS OF RUPTURE EFFORT DE RUPTURE BRUHLAST ESFUERZO DE ROTURA  <b>RESISTENZA A FLESSIONE</b> BREAKING STRENGTH RESISTANCE A LA FLEXION BIEGEFESTIGKEIT RESISTENCIA A LA FLEXIÓN	ISO 10545.4	S ≥ 600 N    R ≥ 12 N/MM <sup>2</sup>
	<b>COEFFICIENTE DI DILATAZIONE TERMICA LINEARE</b> THERMAL EXPANSION COEFFICIENT COEFFICIENT DE DILATATION THERMIQUE LINEARE WÄRMEAUSDEHNUNGSKOEFFIZIENT COEFICIENTE DE DILATACIÓN TERMICA LINEAR	ISO 10545.8	<b>A NORMA</b> ACCORDING TO NORM SELON LA NORME NACH NORM CONFORME
	<b>RESISTENZA AL CAVILLO</b> CRAZING RESISTANCE RESISTANCE À LA CRAQUELURE WIDERSTANDGEGEN HAARRISS RESISTENCIA AL CUARTEADO	ISO 10545.11	<b>GARANTITA</b> GUARANTEEED GARANTIE GARANTIERT GARANTIZADA
	<b>RESISTENZA ALL'ATTACCO CHIMICO</b> CHEMICAL RESISTANCE RESISTANCE CHIMIQUE BESTÄNDIGKEIT GEGEN CHEMICALIEN RESISTENCIA AL ATAQUE QUIMICO	ISO 10545.13	<b>A NORMA</b> ACCORDING TO NORM SELON LA NORME NACH NORM CONFORME
	<b>RESISTENZA ALLE MACCHIE</b> STAINS RESISTANCE RESISTANCE AUX TACHES FLECKENBESTÄNDIGKEIT RESISTENCIA A LAS MANCHAS	ISO 10545.14	<b>A NORMA</b> ACCORDING TO NORM SELON LA NORME NACH NORM CONFORME

Escluso pezzi speciali ed elementi decorativi

With the exception of special pieces and decors . A l'exception de pièces spéciales et éléments décoratifs  
 Ausschließlich Formstücke und Dekorteile . Excluido piezas especiales y elementos decorativos

Per ulteriori informazioni consultare le schede tecniche dal sito [www.naxos-ceramica.it](http://www.naxos-ceramica.it)  
 For any further inquiries, refer to the data sheets on the web-site [www.naxos-ceramica.it](http://www.naxos-ceramica.it)



★ ★ ★ ★ ★  
**NAXOS**<sup>®</sup>  
 C E R A M I C H E  
 FINCIBEC GROUP



**FINCIBEC S.p.A.**

**Uffici Comm.li, Stabilimento:**  
 Strada Statale 569, 169  
 41014 Solignano (MO) Italy

**Magazzino:**  
 Strada Statale 569, 187  
 41014 Solignano (MO) Italy  
 Tel. +39 059.748811  
 Fax +39 059.797376  
 www.naxos-ceramica.it  
 info@naxos-ceramica.it

**Amministrazione:**  
 Via Valle d'Aosta, 47  
 41049 Sassuolo (MO) Italy  
 Tel. +39 0536.861300  
 Fax +39 0536.861351  
 www.fincibec.it  
 info@fincibec.it

**GRUPPO FIRE - Fire S.r.l**



FINCIBEC S.p.A.  
 socio di:

